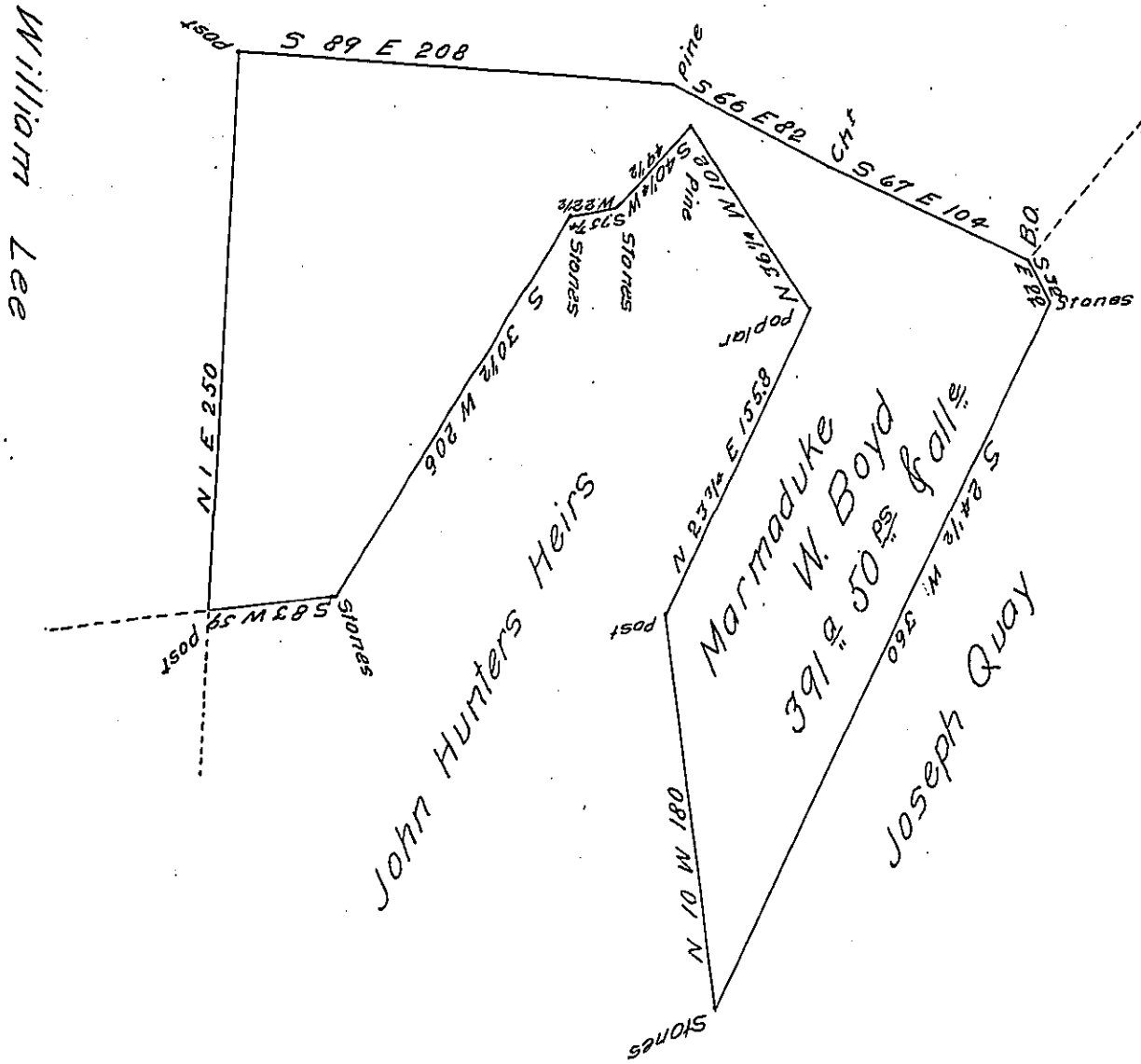


William Lee



Situate in Bethel Township Bedford County Containing 391 acres
 50 perches and allowance of Six per Cent. Surveyed the 17th day
 of October 1838 On Warrant dated the 9th day of October 1838.

W^m A. Vickroy D.S.

To John Taylor Esq^r
 S.G.

IN TESTIMONY that the above is a copy of the original remaining on file in
 the Department of Internal Affairs of Pennsylvania, made
 conformably to an Act of Assembly approved the 16th day of
 February, 1833, I have hereunto set my Hand and caused
 the Seal of said Department to be affixed at Harrisburg,
 this eighteenth day of April 1904

Isaac R. Brown
 Secretary of Internal Affairs.